



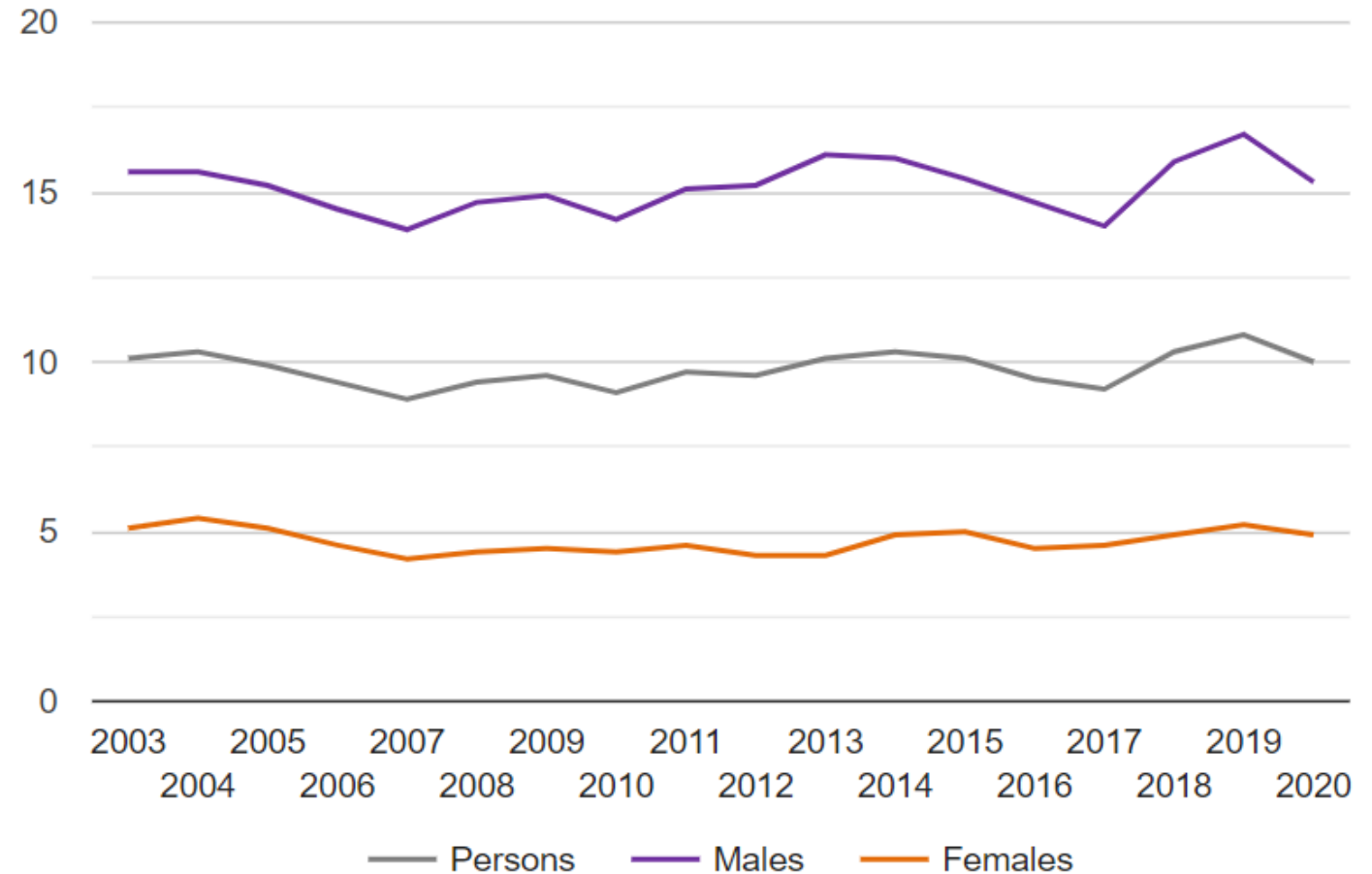
**J** James' Place

Dan Bracken, Head of James' Place London

# Suicide rates by gender

## National age-standardised suicide rates per 100,000 population over time (2003-2020), split by sex

**Value definition:** Mortality rate from suicide per 100,000 population, standardised by age to enable comparisons across geographical populations and over time.



From Samaritans research briefing: Gender and Suicide compiled from ONS data

# Why James' Place exists

In the UK, men are **3 times more likely to die by suicide**

The **space between suicidal thoughts and action is considered to be shorter** for men

In the UK and globally, men are **less likely to access support** especially before a crisis point



**J** James' Place

# The Basics of a James' Place

- an alternative crisis resolution service
- a centre-based therapy service (otherwise low support needs)
- full clinical responsibility
- quick access with no waiting list
- open Monday – Friday 9.30am – 5.30pm



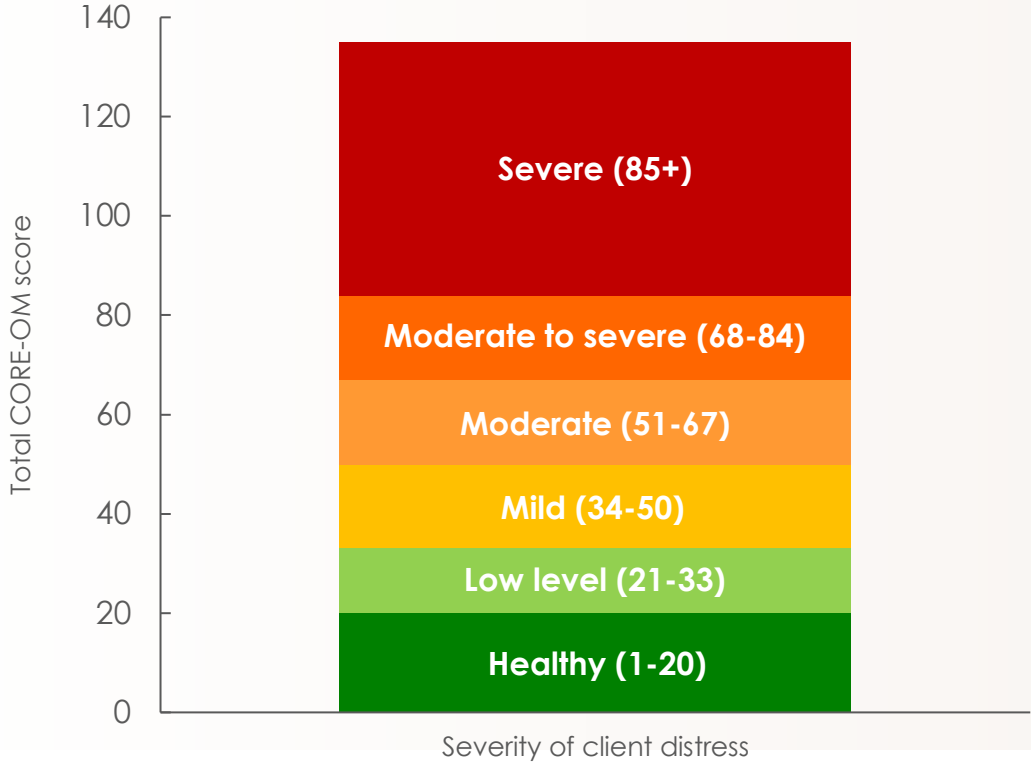
**J** James' Place



# Evaluation and results

**Feedback questionnaires** for men and supporters

**Core 34 Outcome** – validated tool to assess and measure psychological distress

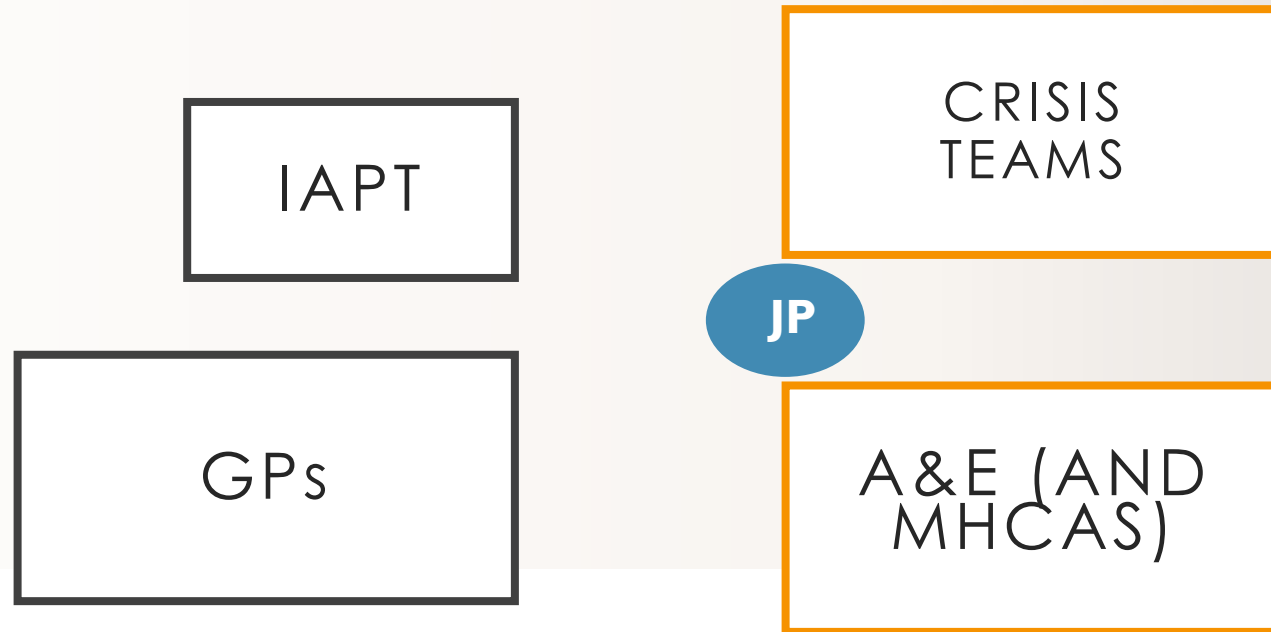


---> **Move from Moderate/Severe to Mild**

	Year 1	Year 2
<b>Average Initial Core</b>	<b>83</b>	<b>86</b>
Range 46-102		
<b>Average Final Core</b>	<b>39</b>	<b>35</b>
Range 12-81		
<b>Average change</b>	<b>-44</b>	<b>-51</b>

# James' Place and C&I partnership

- Unique and challenging partnership building
- Partnerships with Mental Health Trusts ELFT, C&I and starting to build one with BEH



**J** James' Place

# Some learnings from James' Place

- Mental Health Trusts, councils, ICBs etc have an impact on welcoming and attracting new services
- Resources across the board working together would speed up the process
- Targeted campaigns needed to reach specific groups

# How to refer someone to us

- Referral Form:  
[www.jamesplace.org.uk/get-support](http://www.jamesplace.org.uk/get-support)
- Email our admin team and request a referral form [london@jamesplace.org.uk](mailto:london@jamesplace.org.uk)
- Contact us by phone **0203 4888 404** we have a duty practitioner available every day who will be able to discuss the referral with you and send a referral form via email.

